

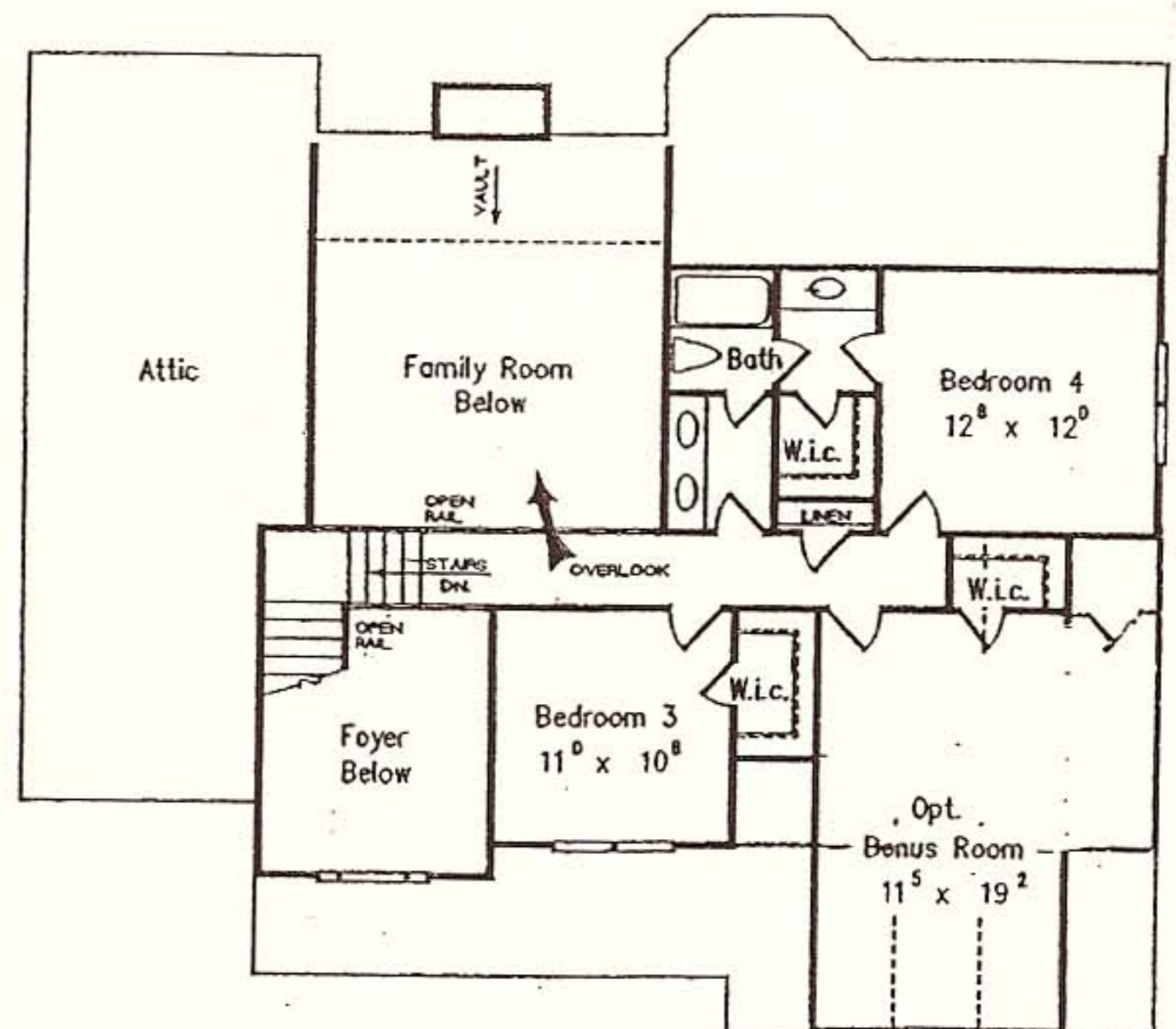
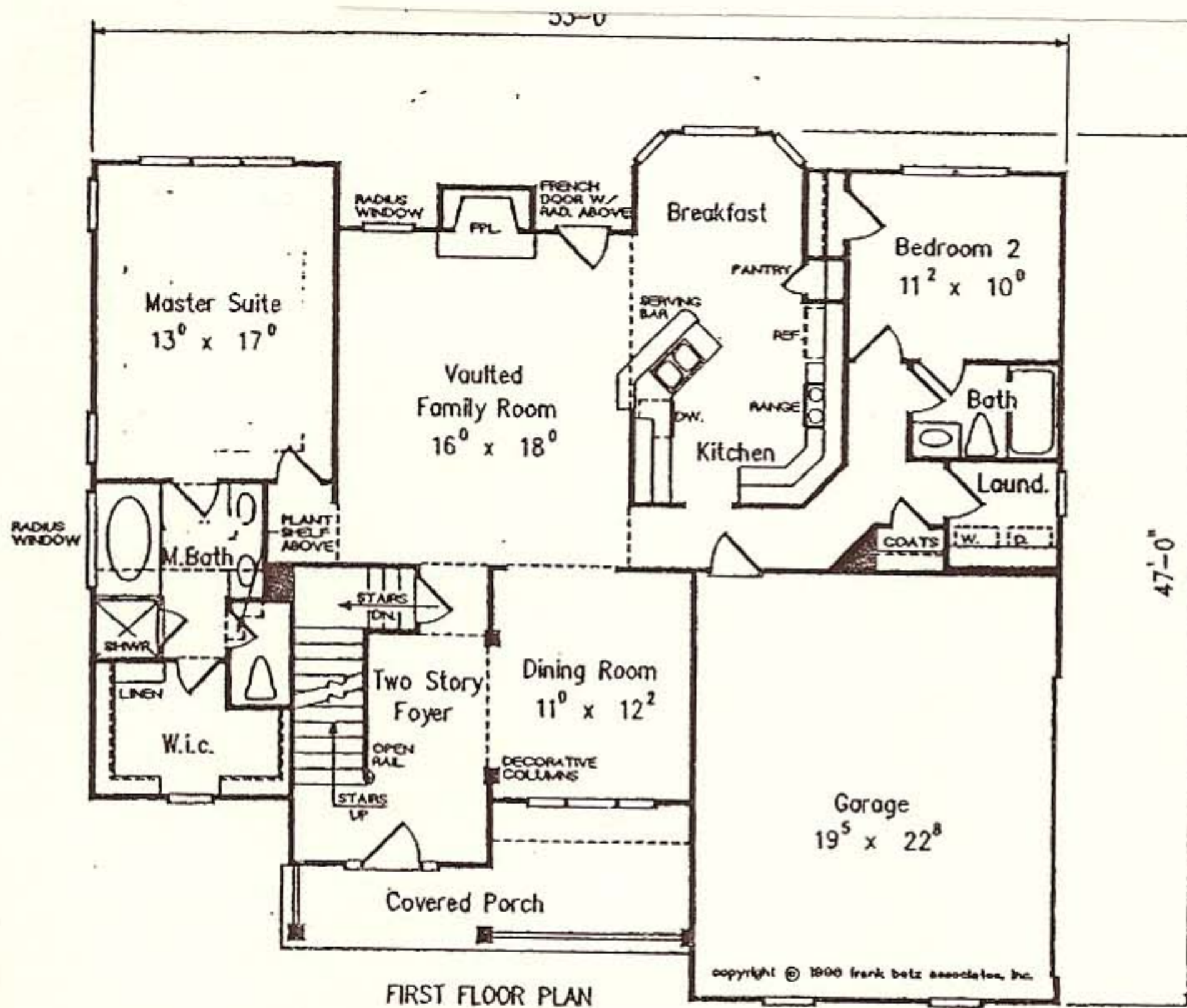
An Exquisite Custom Home By INTERSTATE VENTURES

A *TRUE* Custom Builder

Where Customization means - **MAKING ANY CHANGES THAT YOU DESIRE.**



MIDDLE RIVER



STANDARD FEATURES:

9 Ft. Ceiling on 1st Floor
 Transom windows on 1st Floor
 Flooring: Ceramic in all baths,
 Hardwood in Foyer & Stairs,
 Vinyl in Kit/Brkfst. Room,
 Carpet in all other rooms.
 Concrete Front Porch - 120 s.f.

Garden tub in platform in master
 Appliance Allowance; Maytag -
 Refrigerator, dishwasher, range
 Full walk-out daylight basement
 Two story foyer & family room
 Two car garage with door openers

OPTIONAL ITEMS, IF REQUESTED

Modifications to meet ADA criteria
 2nd Master or 5th Bedroom over garage
 Low E Double Insulated Windows

Fireplaces
 Tankless Hot Water Heater

See our Design Specialist for other modifications

The price is subject to change without prior notice.
 All room sizes are approximate and may change.